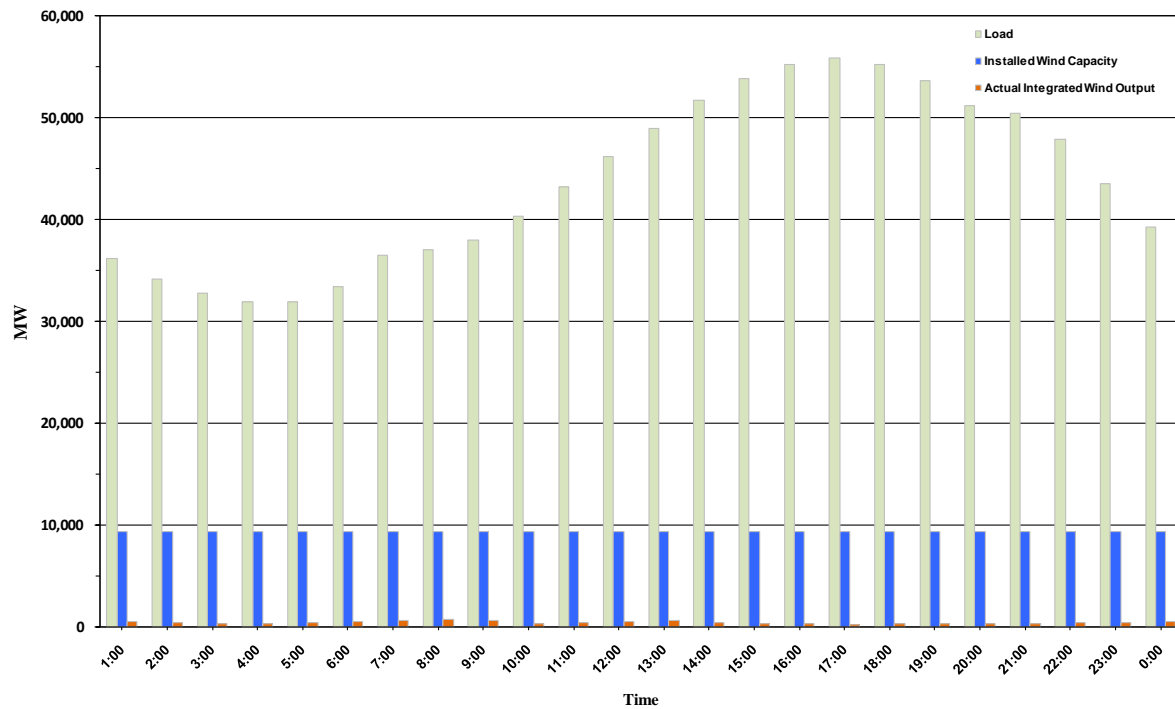




ERCOT Grid Operations Wind Penetration Report: 08/26/10

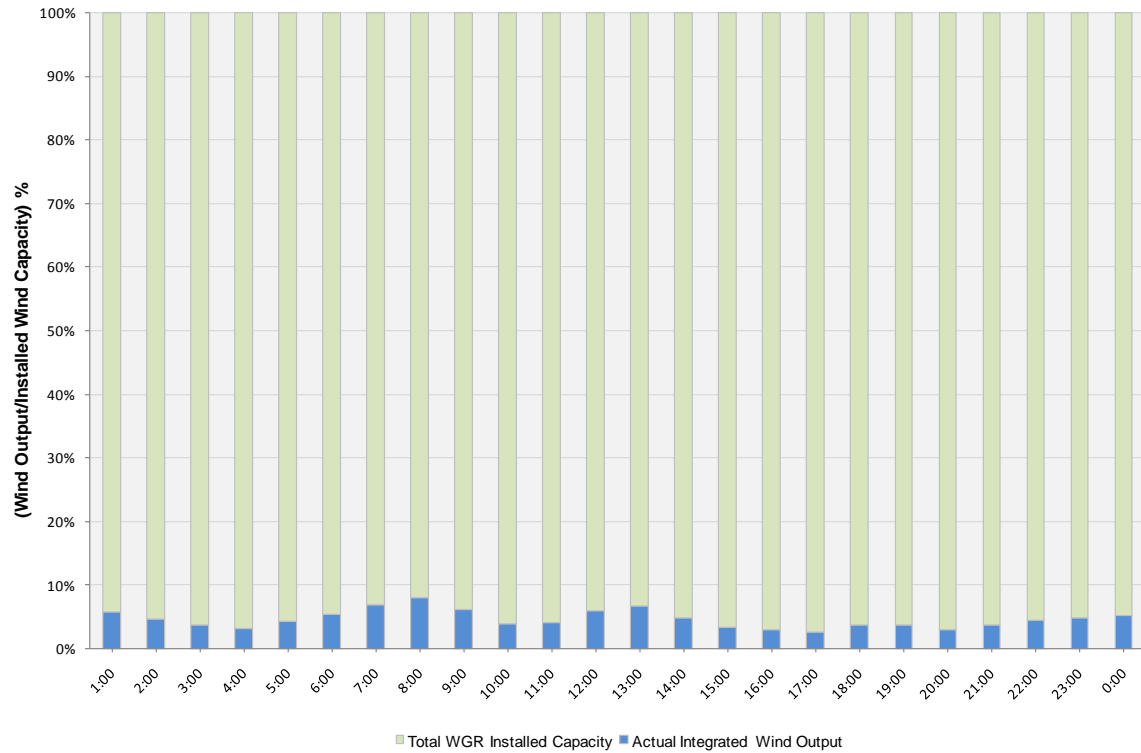
Peak Load	55,826 MW
Load Peak Hour	17
Wind Record 06/12/10	7016 MW
Max Wind value	807 MW
Wind Peak Hour	06:57:32
Wind Penetration %	2.16

Hourly Average Actual Load vs. Actual Wind Output
08-26-2010

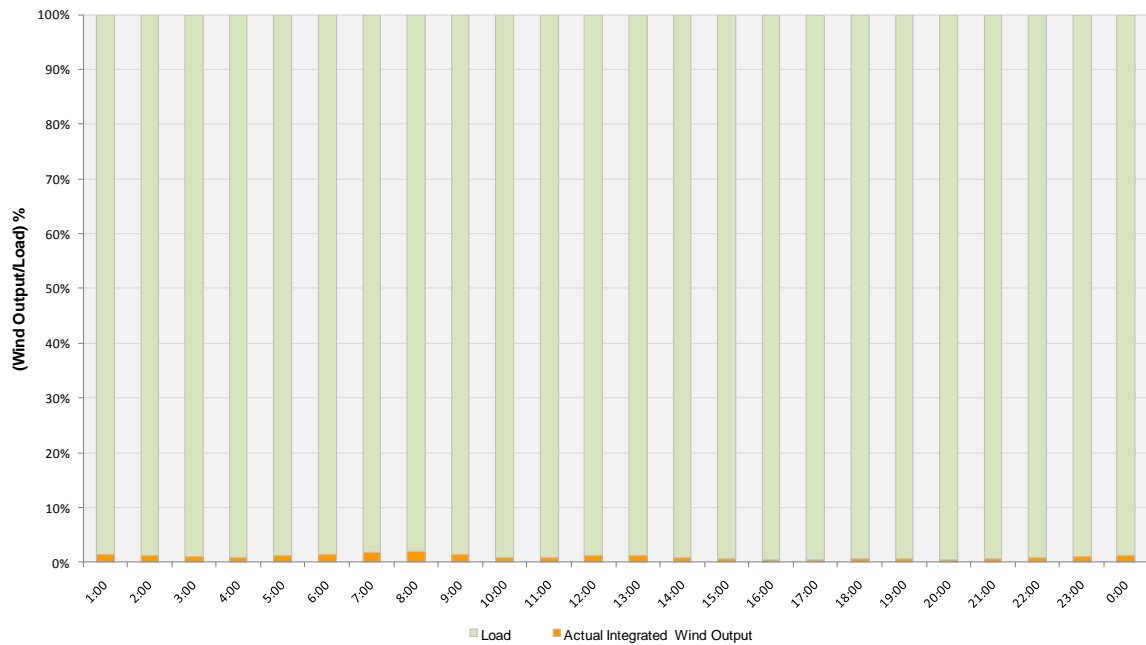




Actual Wind Output as a Percentage of the Total Installed Wind Capacity
08-26-2010



Actual Wind Output as a Percentage of the ERCOT Load
08-26-2010





ERCOT Load vs. Actual Wind Output 08/19/10 - 08/26/10

